

What's going on?



HELP WHERE
IT'S NEEDED

Social Action in Macclesfield

What's going on?

One of Macclesfield's best kept secrets is the amount of social action being provided by small local organisations, and the huge amount of volunteering to provide help where it's needed. A range of these organisations are exhibiting in the marketplace on Sunday 25th June. Information about them is provided in this booklet, and also at <http://hinec.org.uk/whatsgoingon/>. Find out what they do, and maybe even find there's one you would like to get involved with.

**HELP WHERE
IT'S NEEDED**

Social Action in Macclesfield

Just Drop-in

Formed in 2000, by Churches Together in Macclesfield, we are a vibrant local Charity providing a range of services to children and young people from Macclesfield and its surrounding areas. In particular, we seek to support those who have or are facing multiple disadvantages and those experiencing challenges with their emotional health.

We seek to remove red tape and to promote quick and easy access to all of our services for young people aged 12-25.

We offer:

- A free counselling service
- An information and support service
- A life-skills kitchen diner 'MyPad'
- A range of life-skills projects
- Foundations Early Help and Friendship groups for 12-18 year olds
- We are also an active partner within the multi-agency Cheshire East Emotionally Healthy Schools Project

Street Angels

Street Angels is about offering safe people and a safe place within the night time culture. It is about offering those who become vulnerable a safe solution that will see them getting home safe. Be it people leaving bars, clubs or restaurants, those who work in the town centre, those waiting for a bus or taxi home, or those out clubbing and in the pubs – Street Angels can be a visible presence that makes a massive difference. It is based at the United Reformed Church Park Green right in the centre of Macclesfield's night life area. It is supported by the police and local authority and works closely with the pubs, clubs and restaurants of the area. It is an initiative of HOPE in NE Cheshire and is supported by over 30 local churches.





WHAM nightshtelter

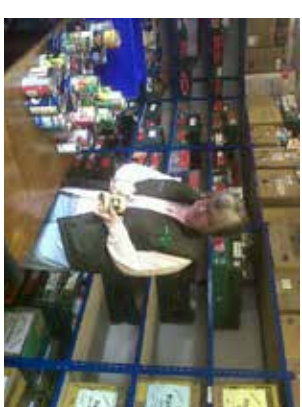
Winter Homeless Accommodation Macclesfield

The objective of WHAM is to provide winter weekend cover in the period from late December to late March at churches in the town, with each participating church providing shelter for a weekend at a time. Shelter is provided on Friday, Saturday and Sunday nights with host churches providing meals on Friday and Sunday evenings and breakfast each day. While this is only a partial solution to the problem, WHAM covers the worst of the winter at times when least assistance is available elsewhere. Our objective is to "Begin the end of the homeless experience."



Silk Life Church Foodbank

The Silklife Foodbank provides emergency food relief to people in Macclesfield who are in desperate need. Since December 2010, we have worked with local agencies to offer food parcels to any people across our town who may otherwise go hungry. Through our referral process, we make sure that the food is going to the right people, and we really appreciate working alongside other charities and organisations. We have a team of volunteers who help to collect, sort through, pack, and deliver the food parcels, and we are so grateful for their help, and for the donations of food that come to us from across the town.



Treehouse Food Kitchen

Treehouse Food Kitchen is a service provided to the homeless, socially isolated, and those in financial difficulty based in Macclesfield. Established over 3 years ago, Treehouse provides a hot meal, drinks, sleeping bags, bedding, toiletries, underwear, socks, clothing, a non-judgemental listening ear, and referrals or information of other services.

Treehouse has the support of many churches, businesses and individuals in the local area. We are a non-profit organisation run by volunteers who tirelessly give up their time to help all that attend.

Treehouse Food Kitchen meets at Eilm Christian Life Centre, Parsonage Street Macclesfield every Saturday evening from 5 – 7.30pm.



Cre8

Cre8 is a local charity based on the Moss Rose Estate in Macclesfield for the last ten years. From very small beginnings, Cre8 has grown to be a significant part of the neighbourhood with a variety of projects like music, alternative education, youth clubs, bike workshops, residentsials and outreach work.

Cre8 believes the things which corrode and gnaw away at the emotional, physical and spiritual wellbeing of community can be resolved by the people and the skills from within that community. We model Christian living, with prayer, work, learning and sharing food at the heart of everything we do. Our work is innovative and often life-changing and helps to support and enable people to play a full and active role in their neighbourhood.





ROAR

Reach Out and Recover

ROAR is a not-for-profit, support in the community organisation, offering service users a safe, secure and stable environment in which they can start to tackle their additions and personal issues. Based in Macclesfield, ROAR is a 9 bed recovery housing project offering a safe, secure, stable 24 hour supported environment for people to reside.

Those who access our service are shown compassion, given hope and a place where they can begin to believe in themselves. We empower people to take control of their lives and help them to develop practical skills whilst working in the community.

Service users are allocated tasks and responsibilities based on their strengths and skills. We work in partnership with other community based organisations in order to give the people within ROAR the best opportunity at addressing their issues, and in turn, prevent re offending.

Those who follow our programme are offered a pathway to a new life: from early stage 24 hour support, towards supported accommodation and, finally, their own independent tenancies.



Golden Memories Group

The Golden Memories Group started back in July 2015. A need was identified in the community to help and support people with dementia and their carers. It took very little organising to get started as our church, Tytherington Family Worship Church, backed the idea all the way and offered our church facilities to run the group.

We offer a morning session once per fortnight in a warm and comfortable venue, with support and help from friendly volunteers.

The team of volunteers provide lots of tea and coffee, singing, music, games and gentle activities. Having fun is the order of the day and high on the agenda.

Watching a loved one struggle with dementia is a most painful ongoing experience.

Therefore meeting other carers, receiving friendship, sharing information and experiences has been described as a life saving experience and is the most important aspect of the Golden Memories Group. Other churches, including the United Reformed Church in Park Green, also host dementia support groups.

Eco-church in the community

- As Christians we believe in sustainable communities. That means supporting local, independent businesses and avoiding whenever possible on-line shopping or out-of-town shopping centres.
- We want to work with the whole community to develop local renewable energy sources, be they solar, wind or ground-source. Community owned energy sources will mean an end to the exploitation of the poorest in the community by the big 6 energy companies.
- Many people are still living in draughty, damp, cold houses or flats. We want to help local businesses to access funding to help local people to keep warm in their homes.
- Our transport systems are designed for those with cars and plenty of money. We will campaign for better provision for pedestrians and cyclists; and an improved and accessible public transport system. This will take cars off the roads and improve the environment for everyone. Far too many people are killed or injured by cars, and are suffering from ill-health created by vehicle engines.
- We will engage with our MP to ensure that he understands the need to limit climate change.

Citizens Advice

Citizens Advice is your local advice charity in Macclesfield.

Our service is free, confidential and open to all. Staff are trained to advise on virtually any issue, including:

- benefits
- money problems
- employment
- consumer rights
- housing
- neighbourhood disputes
- education
- healthcare
- immigration human rights
- relationships, family and personal issues.

We provide you with facts and different options so you can make the decision that's right for you. We also offer practical support e.g. help filling forms.

We provide advice in 5 towns in the north of Cheshire East. In Macclesfield our address is Citizens Advice, Sunderland House, Sunderland Street, Macclesfield SK1 1 6JF.



Cheshire Streetwise

Cheshire Streetwise, based at the Elim church, was set up in 2014 by Maggie Falconer-Drew-Taylor and her husband Iain, as a Community Interest Company offering basic assistance to marginalised people in the form of a soup kitchen, a place to come and chat and socialise in a friendly environment, to get out of the cold, or away from other temptations. It provides a 'gateway' to find or obtain services that some people may not be aware they can have, or maybe unsure of how to access offering support to local people who need help with job searching, CV writing, filling in forms, online applications, etc.



Cheshire Streetwise offers counselling and support too. Many of the people we meet also need practical help, confidence building, maybe help moving on with their life following a loss, break up, or some other life experience.

Cheshire Streetwise works alongside a growing network of contacts and collaborators and isn't precious about passing you on to the right organisation. Everything is based on trying to make your community a better place for you to live.



The second part of Cheshire Streetwise's work is the Macclesfield Furniture Reuse project. With a shop on Sunderland Street, storage facilities, workshop, and showroom premises on Gilchrist Avenue, quality re-usable furniture and household goods are recycled within the community helping local people and the environment.

Info at:
www.hinec.org.uk/whatsgoingon

 **HOPE** IN
NORTH EAST
CHESHIRE